

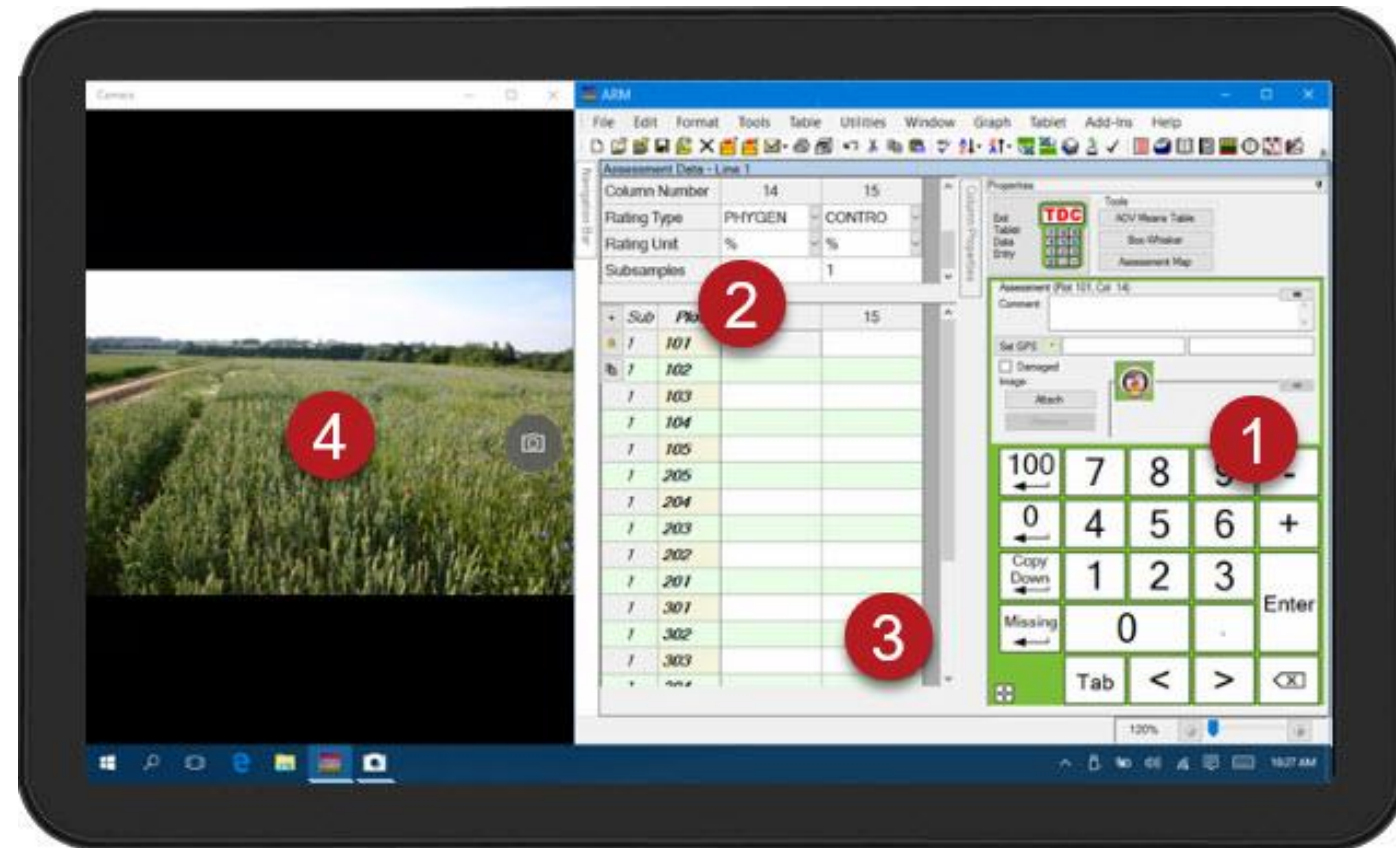
# ARM TDCx:

---

# Tablet Data Collector

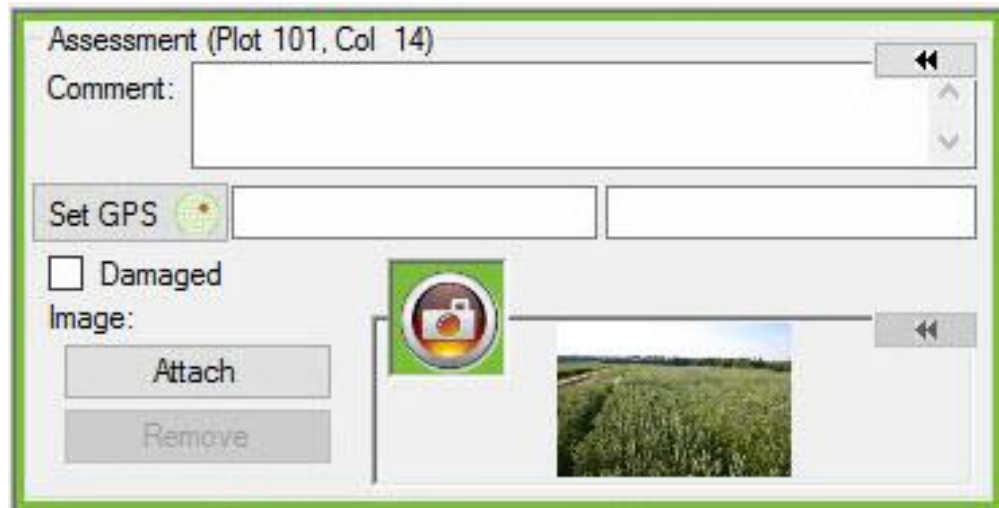
# Optimized display for collecting data

1. Integrated keypad
2. Pinch-to-zoom
3. Simplified interface
4. Launch and align Windows Camera app for pictures



# Assessments are more than a number

---

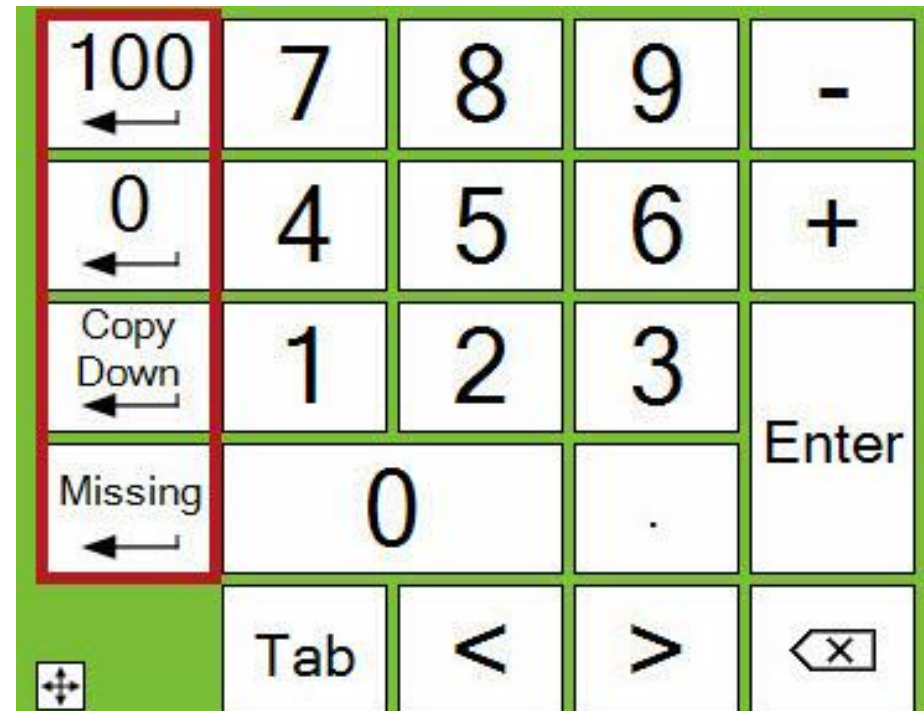


The screenshot shows a mobile application interface for data collection. At the top, it says "Assessment (Plot 101, Col 14)". Below this is a "Comment:" text area. A "Set GPS" button with a location icon is next to two empty input fields. There is a checkbox labeled "Damaged" which is currently unchecked. Underneath is an "Image:" section with a camera icon, a photo of a field, and two buttons: "Attach" and "Remove".

- Record GPS coordinates
- Take plot pictures
- Mark plots as damaged
- Add comments for detail

# Collect data more efficiently

- One-touch shortcut keys
- Set cursor order to move across or down columns
- Enter any trial info directly into ARM trial



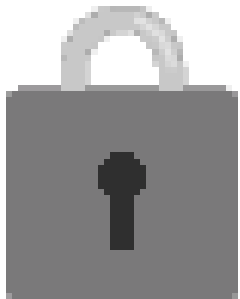
# Improve the quality of ratings

- Avoid transcription errors
- Enforce data range limits
- Review data quality on-site
  - Check for outliers
  - Heat map of values
  - Box-whisker graph



# Protect your data

---



Set backup path to quick-save at each plot

Use external drive (e.g. SD card) to protect against hard drive failure

# Record GPS coordinates

Read current GPS coordinates into:

- Latitude and Longitude site description fields
- Individual plots

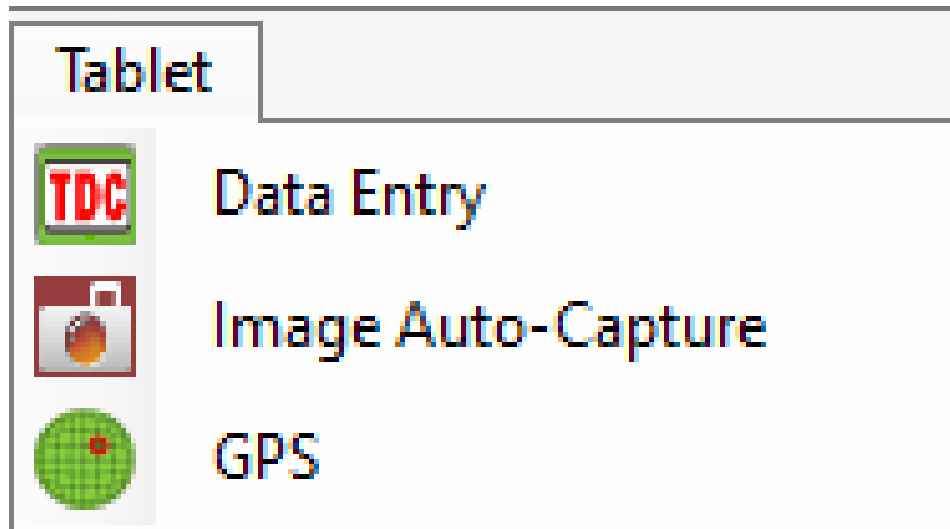
	Latitude	Longitude
Lower Left	50.5667	4.6833
Upper Left		
Upper Right		
Lower Right		

GPS Accuracy of LL Corner: 7 m

Altitude of LL Corner: 152.00 M

# Demonstration

---





# Cursor Order

Assessment Data - Line 1				
Column Number		3	4	
Subsamples		3	3	
+ Sub	Plot	3	4	
1	101			
2	101			
3	101			
1	102			
2	102			
3	102			
1	103			
2	103			
3	103			
1	104			
2	104			
3	104			

Tablet Data Entry Options

Cursor order

By column across 'Plot'     Across columns within subsample

Across columns within 'Plot'

Help    Cancel    Next >

# Where are the pictures stored?



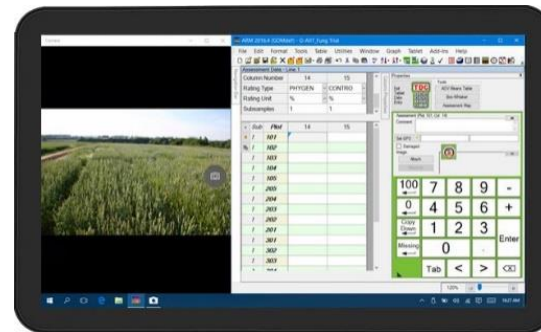
# Licensing

---

TDCx lives on same device as ARM license

**1 PC + 1 tablet**

**Full ARM + Field Bundle**



# Hardware requirements

---

- 64 GB internal storage
- 4 GB RAM
- Sunlight-readable display/screen protector
- Windows 10
- Touch screen

## For certain features:

- Rear-facing camera (6+ MP)
- Integrated GPS (or third-party GPS receiver)

# Hardware considerations

---

- Ruggedized units
- Screen glare
- Screen size
- Processor
- Battery life
- Digitizer pen



## Hardware Recommendations

- Panasonic FZ-G1
- Dell Latitude 7212
- Juniper Mesa 2

# Accessing ARM files with TDCx

---

## Network drive

- "Available offline" feature



## Cloud Storage

- Dropbox, SharePoint



## USB Sync cable

- C2G - GoSuite software



Thank you!



Questions?

[gdmdata.com/Products/Tablet Data Collector](http://gdmdata.com/Products/Tablet Data Collector)

support@gdmdata.com